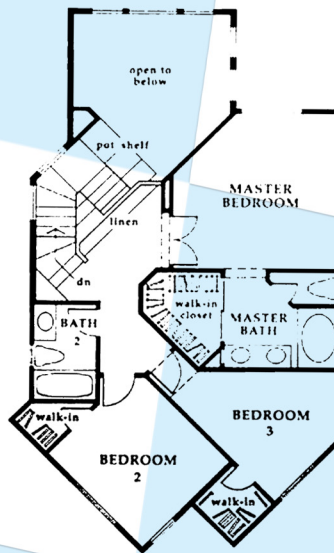
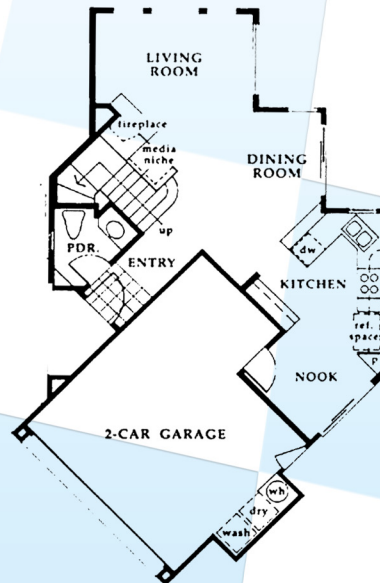


# Aspire - Plan 4

3 or 4 Bedrooms & 2.5 Baths  
Approx. 1,320 - 1,490 Square Feet



**Kris & Steve  
Berg**

"It's Your Move!"

BROKER ASSOCIATES



For Additional Scripps Ranch Floor Plans Visit  
[www.SanDiegoCastles.com](http://www.SanDiegoCastles.com)  
**(858) 530-BERG**

Floor plans are per builder and subject to change by builder or owner.  
\* Square footage per builder, agent has not independently verified.